

# M27 *performance line*



Note: Standard version. Dimensions and weights can be changed depending on vehicle, pump and equipment. Dimensions in mm, exemplary for MB Arocs 1835. Illustrations include optional extras.

## Advantages of the Performance Line equipment series

- **Familiar Putzmeister quality**  
 Known performance and quality – Like every Putzmeister machine, the Performance Line models are characterised by **high availability, low operating costs and high part quality.**
- **Standardized configuration**  
 The equipment of the Performance Line is firmly defined – The configuration includes **all that a concrete pump needs to cope with everyday site work** – special functions and comfort options, for which Putzmeister is known, have deliberately been omitted.
- **Short delivery times and attractive prices**  
 The models are produced with standardized processes in stock. This limits the variety of options and customer-specific adaptations. For our customers this means – **immediately available, at attractive prices!**

## Placing boom M27

<b>Folding type</b>	4-arm Z-folding
<b>Vertical reach</b>	26.4 m
<b>Horizontal reach</b>	22.1 m gross
<b>Depth of reach</b>	16.6 m
<b>Unfolding height</b>	6.7 m
<b>Length end hose</b>	4 m
<b>Delivery lines</b>	DN 125, max. 85 bar
<b>Slewing range</b>	365°

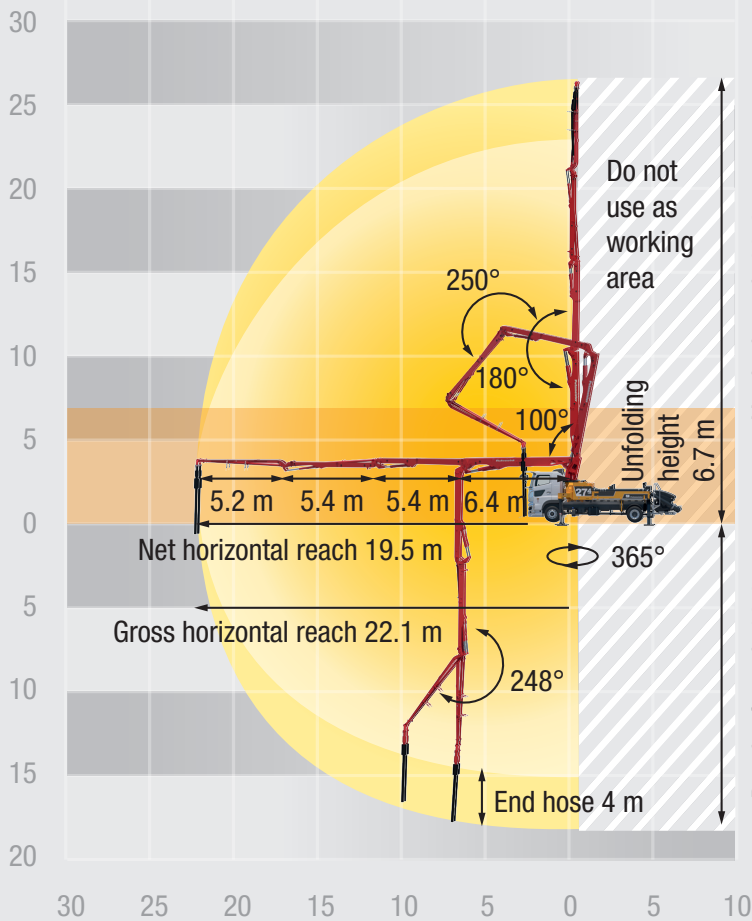
## Pump BSF .11H

<b>Output</b>	110 m <sup>3</sup> /h
<b>Pressure</b>	78 bar
<b>Stroke</b>	1400 mm
<b>Cylinder Ø</b>	230 mm
<b>Strokes/min</b>	32

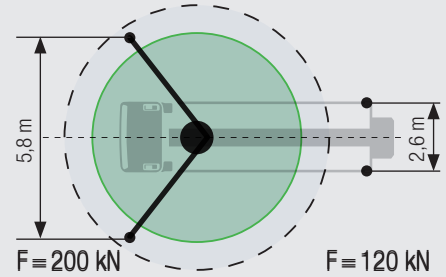
All data represent theoretical maximum values.

# M27 *performance line*

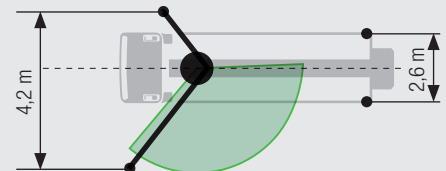
Reach diagram, support



Standard – Full support



OSS\*\* – One-side support



Dimensions can differ depending on configuration.  
Support width based on center of support leg.  
Diameter of swivel plate 270 mm.

\*\* for non-CE markets only

## Serial equipment Performance Line

11H incl. standard pistons	Ergonic 3.0	Vibrator
Paintwork: arctic white (MB9147)	Control lighting	Storage box painted
Delivery line (2-layers)	Europe KIT	High pressure water pump

## Options

End hose squeeze valve
Cable remote control
Underride guard
PM Connectivity

### Putzmeister Concrete Pumps GmbH

Max-Eyth-Straße 10 · 72631 Aichtal · Germany  
P.O.Box 2152 · 72629 Aichtal · Germany  
Tel. +49 (7127) 599-0 · Fax +49 (7127) 599-520  
pmw@putzmeister.com · www.putzmeister.com

